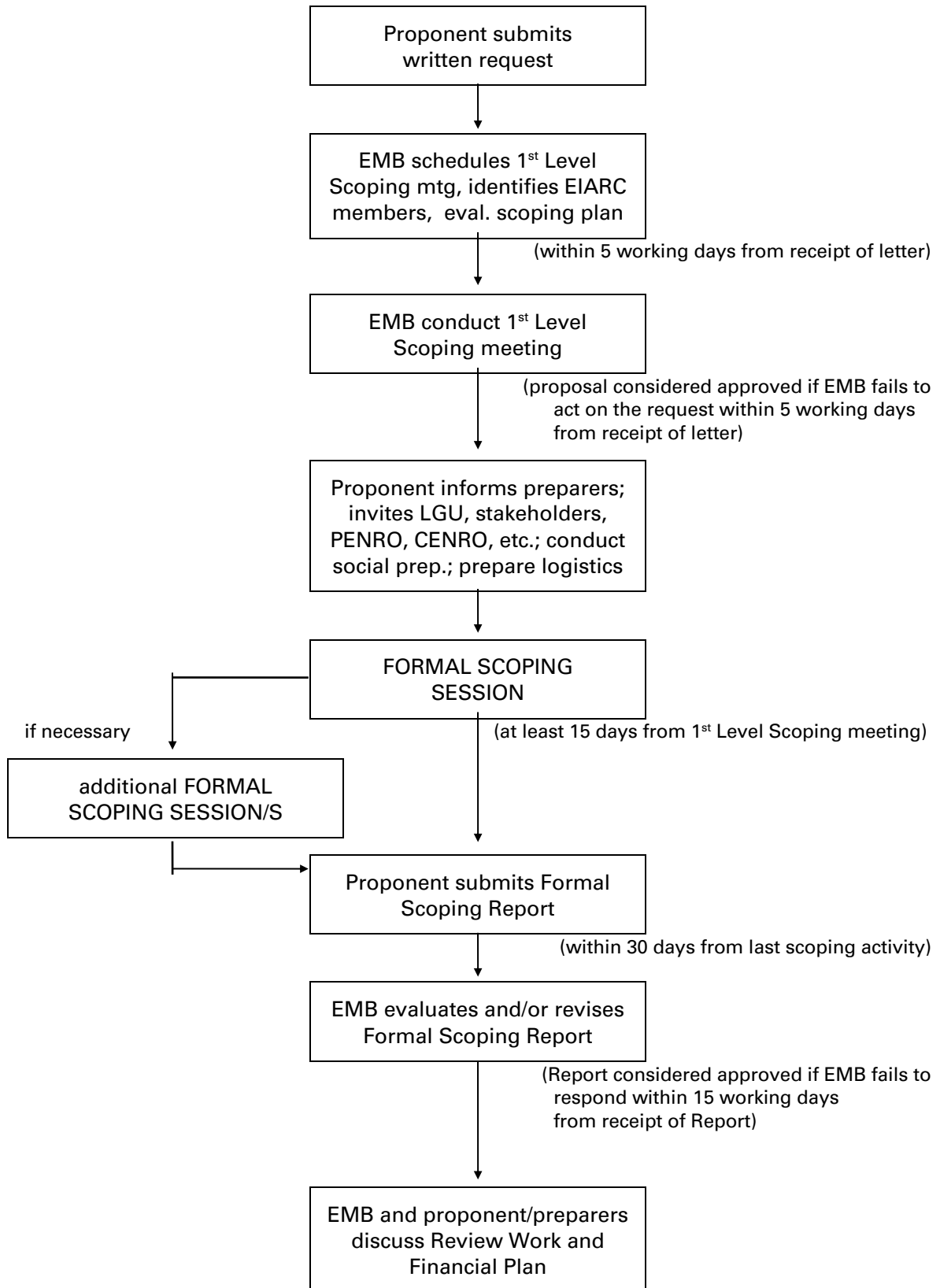
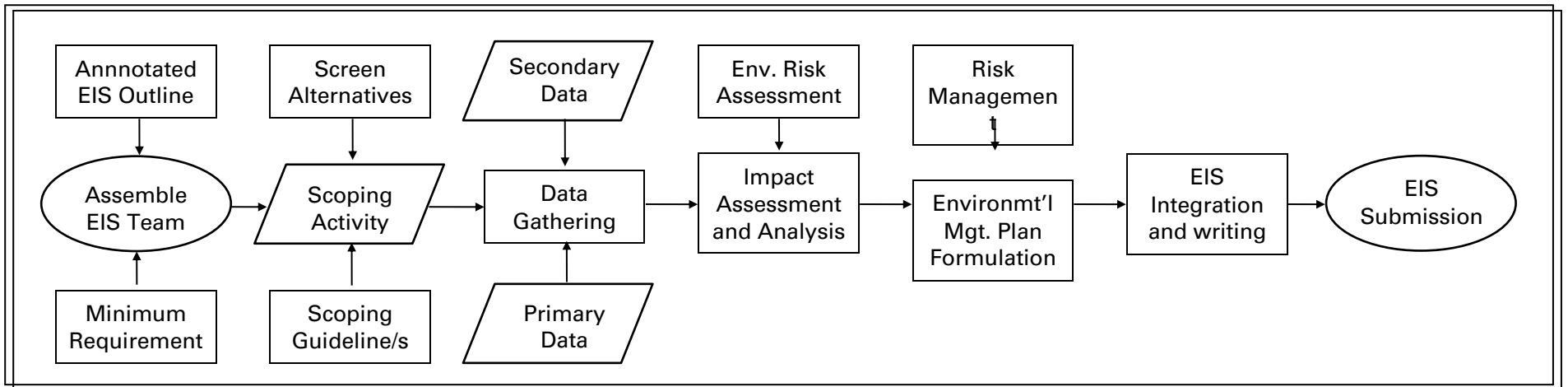


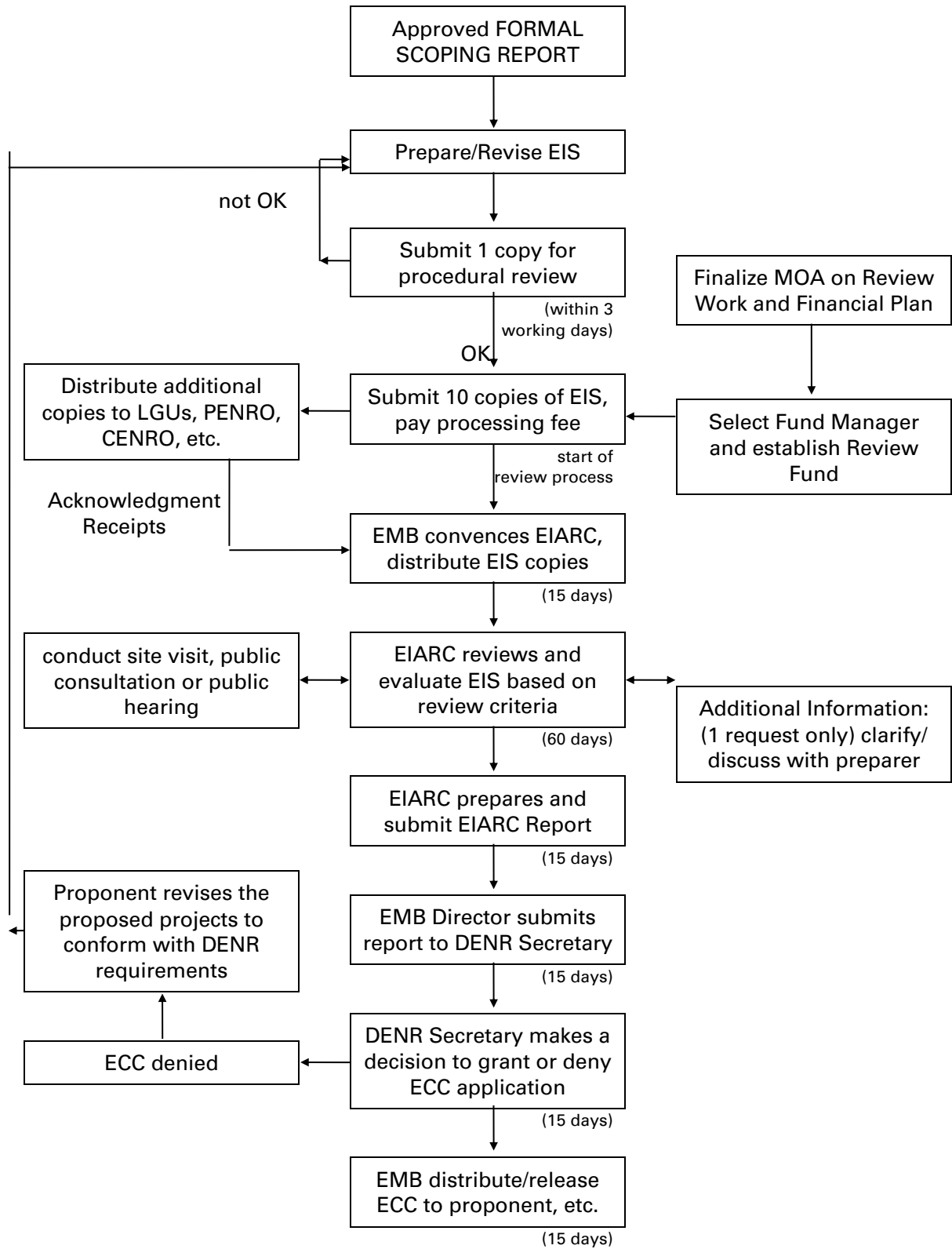
FLOW CHART of SCOPING PROCESS



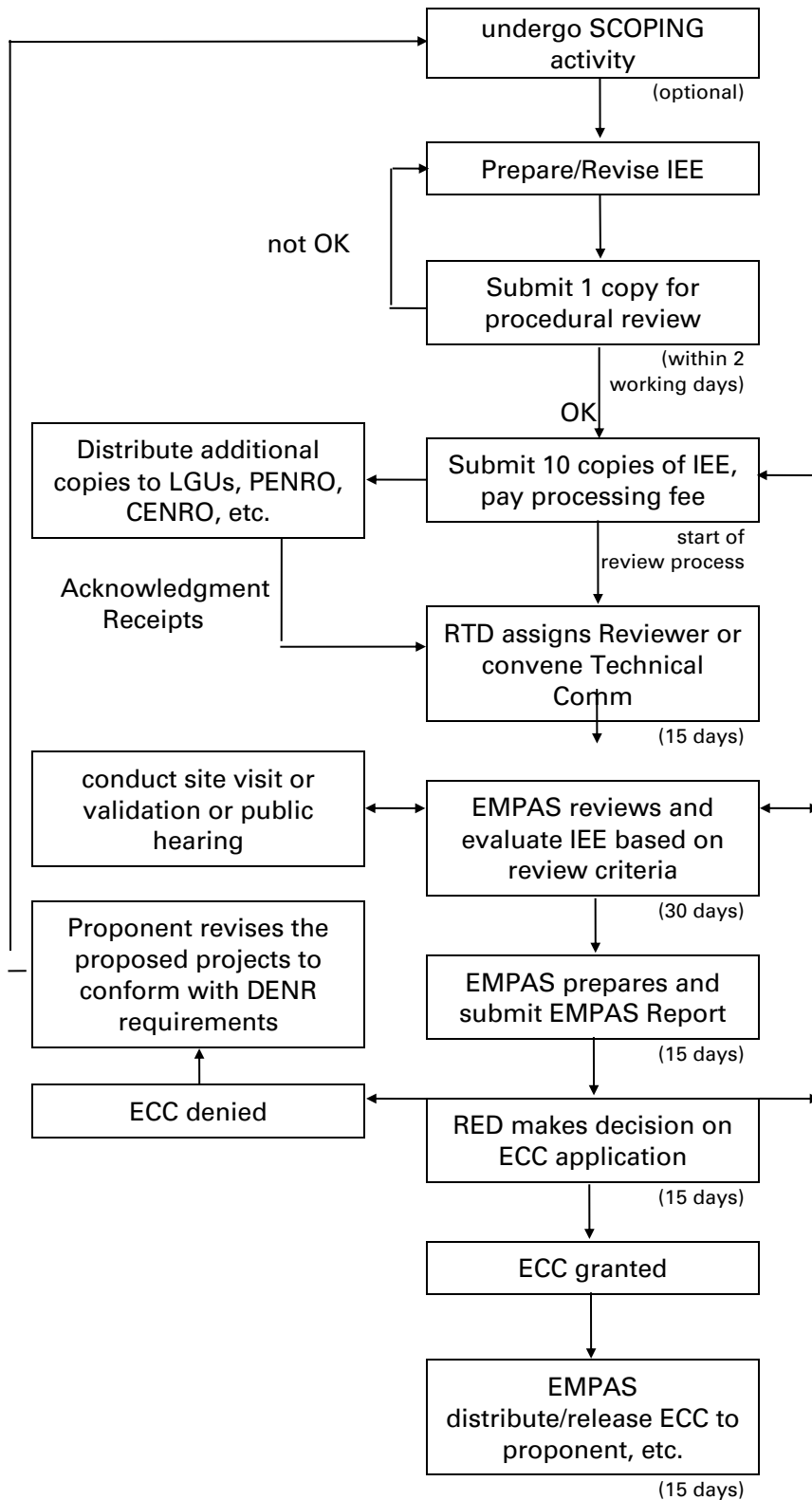
EIS Preparation and Submission



FLOW CHART of EIS REVIEW PROCESS



FLOW CHART of IEE REVIEW PROCESS



Finalize MOA on Review Work and Financial Plan



Select Fund Manager and establish Review Fund

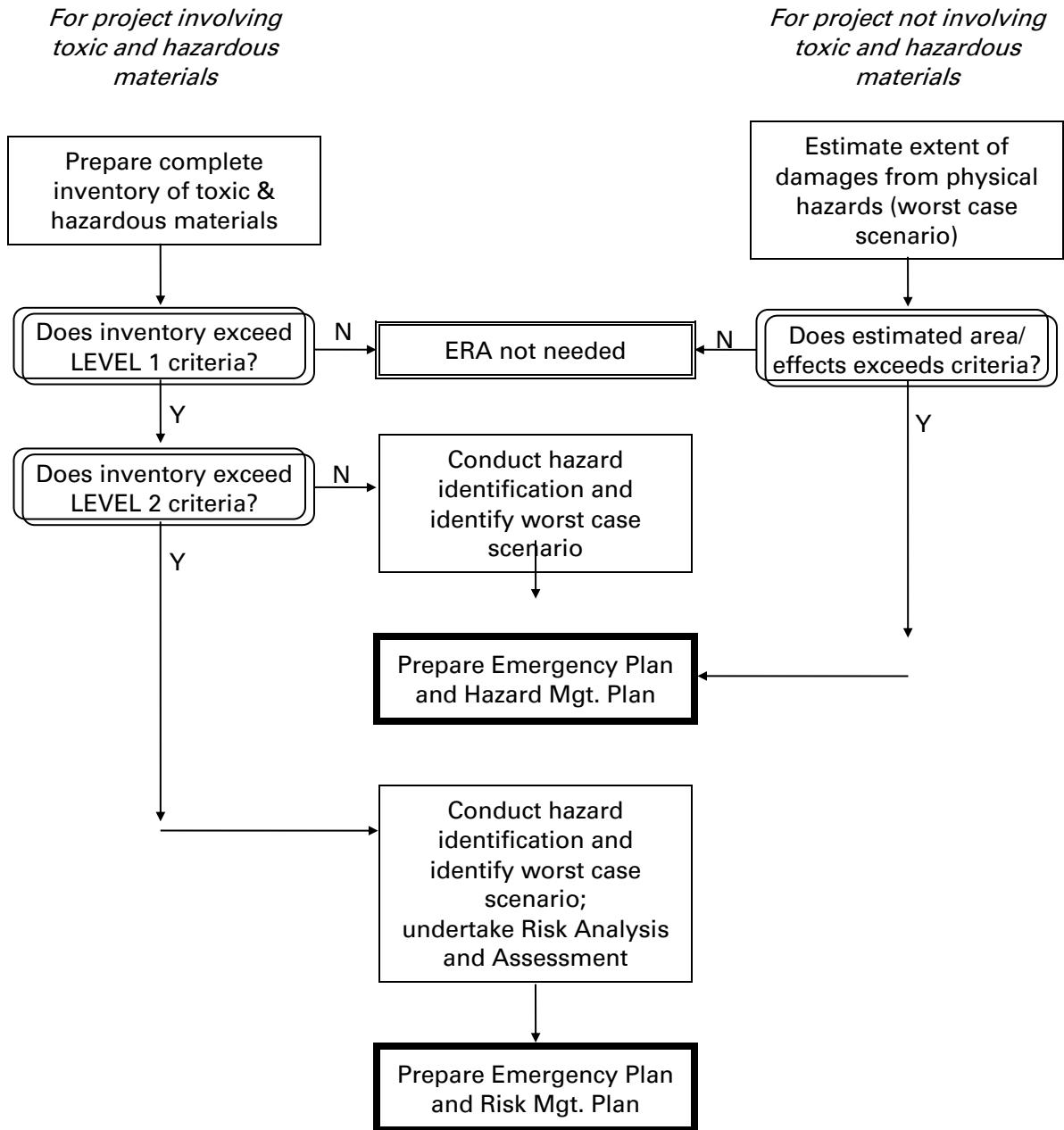
Additional Information:
(1 request only) clarify/
discuss with preparer

undertake EIS



follow procedures for undertaking EIS
(Chapter 5)

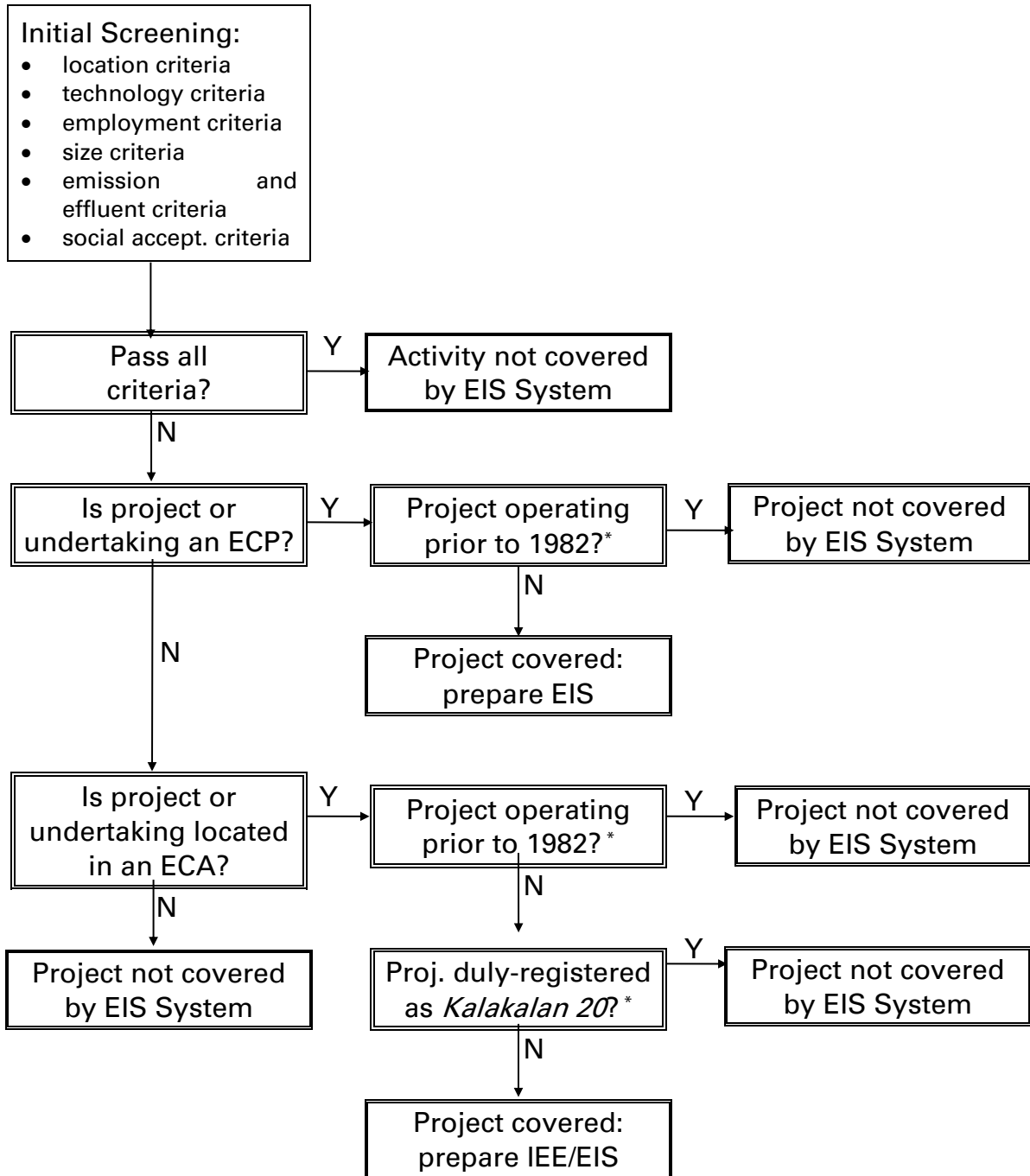
FLOWCHART for ERA DETERMINATION



Philippine EIS System Legal and Regulatory Framework

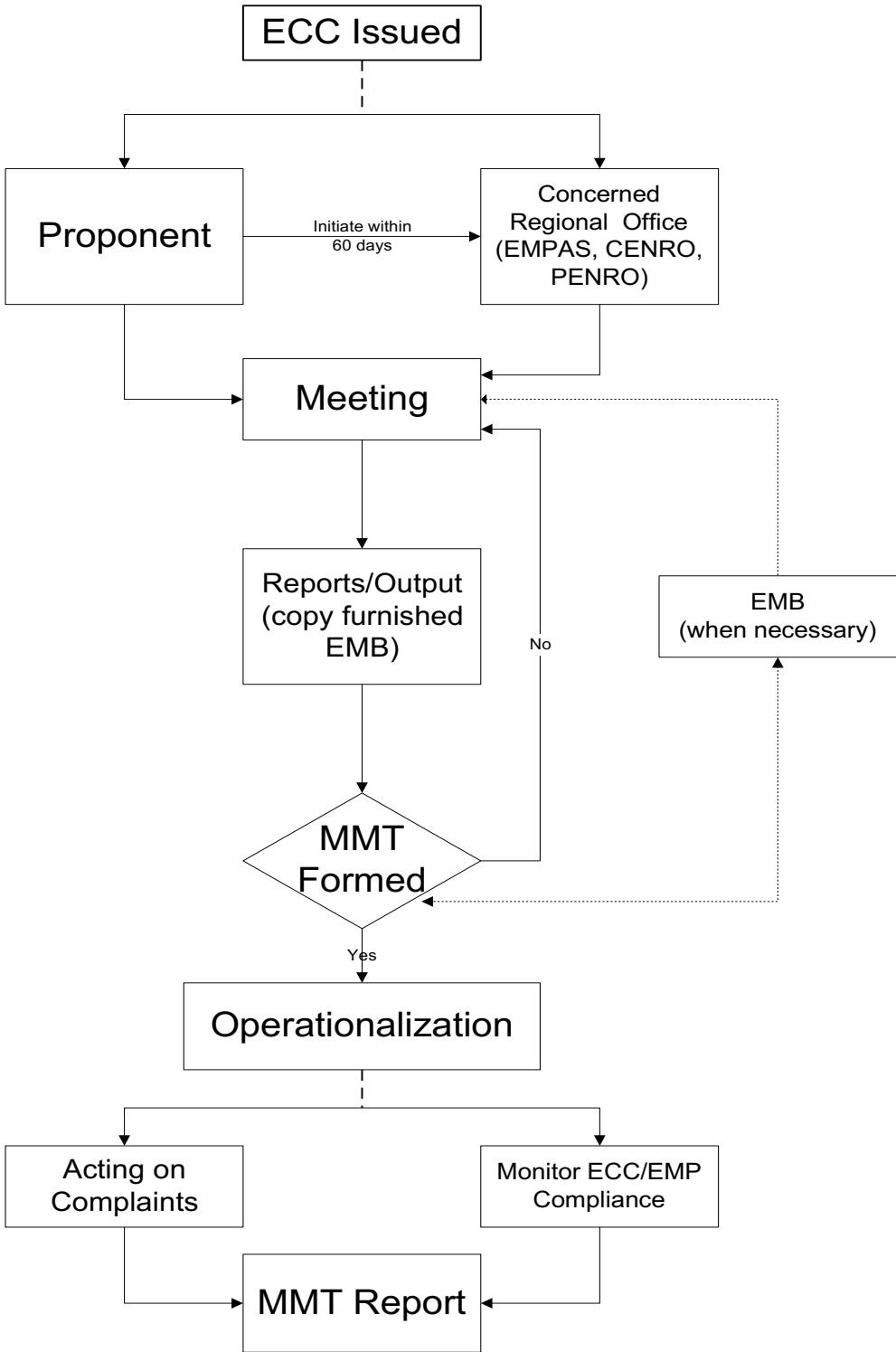
Laws/Regulations	Year	Features
Presidential Decree (P.D.) 1151	1977	Philippine Environmental Policy: requires sponsors of all government and private projects affecting the quality of the environment to prepare an environmental impact assessment (EIA)
P.D. 1586	1978	Establishing an Environmental Impact Statement (EIS) System: centralizes the EIS System under the National Environmental Protection Council (NEPC), & authorizes the President and NEPC to proclaim projects and activities subject to the EIS System
Proclamation 2146	1981	Proclaims certain areas and types of projects as environmentally critical and within the scope of the EIS System
DENR Administrative Order 96-37	1996	Revising DAO 21, Series of 1992, to further strengthen the implementation of the EIS System

DETERMINATION of COVERAGE

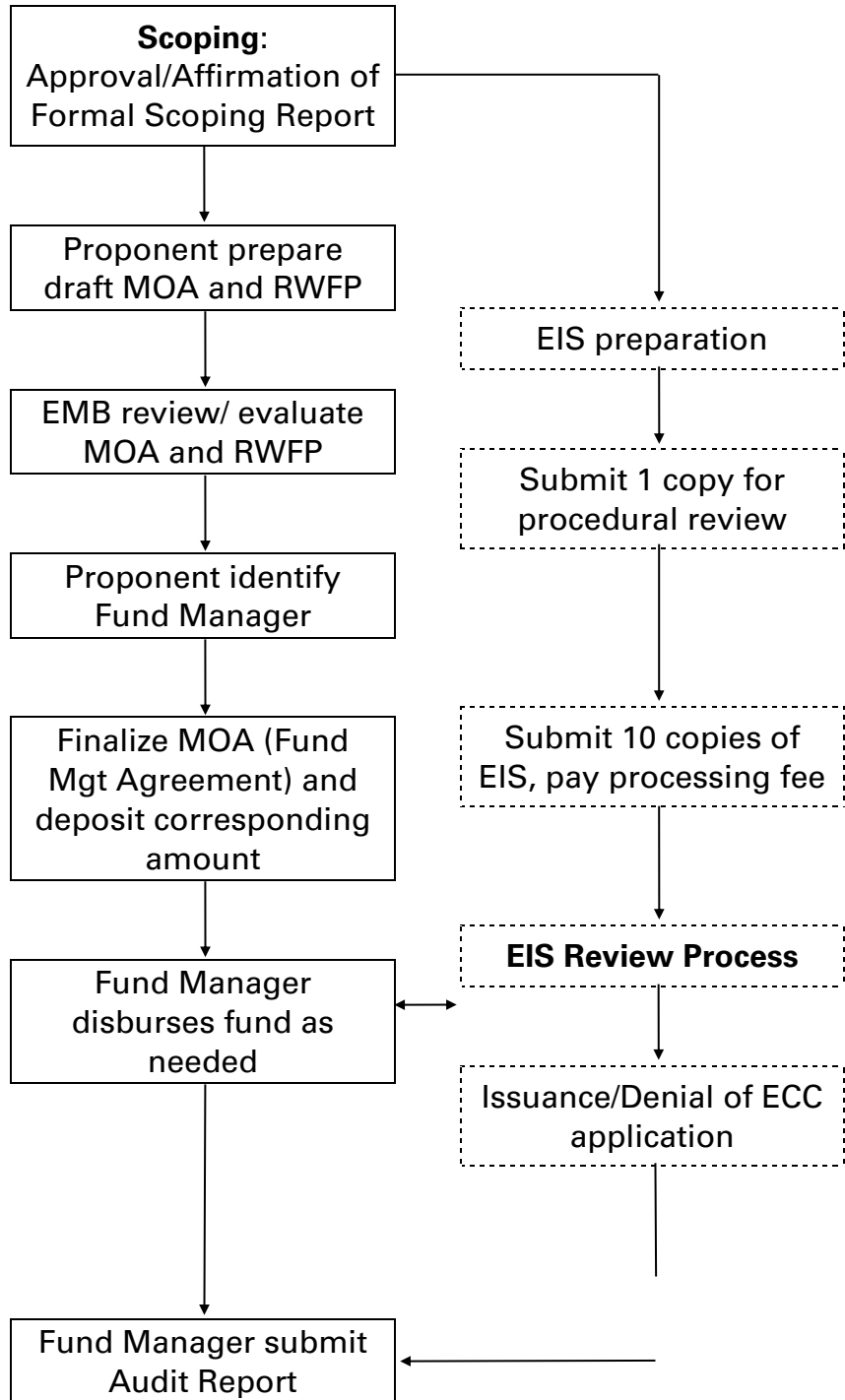


* refer to guidelines on non-coverage for more details

COMPLIANCE MONITORING PROCEDURAL FRAMEWORK



PROCEDURAL FRAMEWORK for ESTABLISHMENT OF REVIEW FUND



PROCEDURAL FRAMEWORK for ESTABLISHMENT OF EGF

