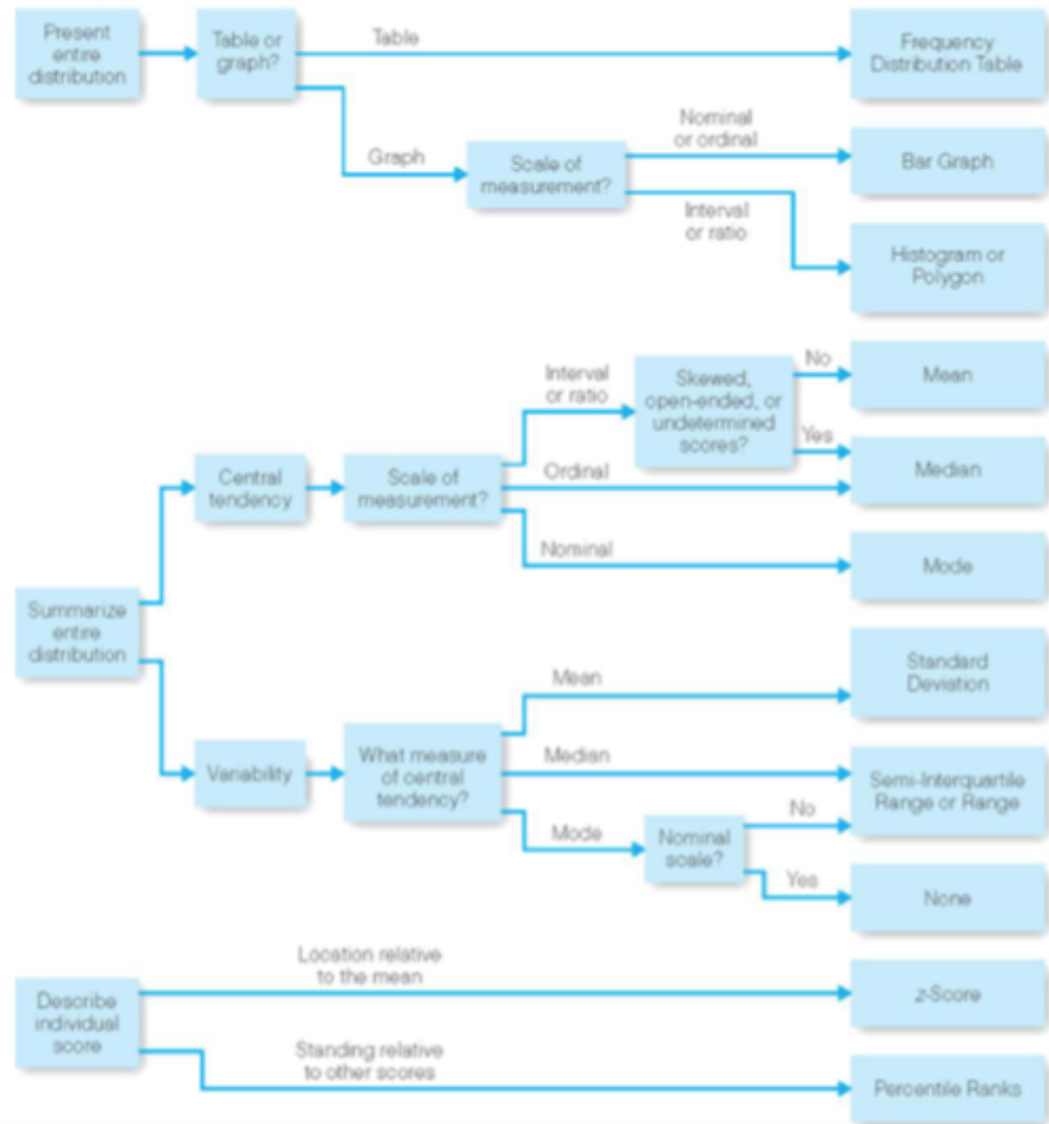


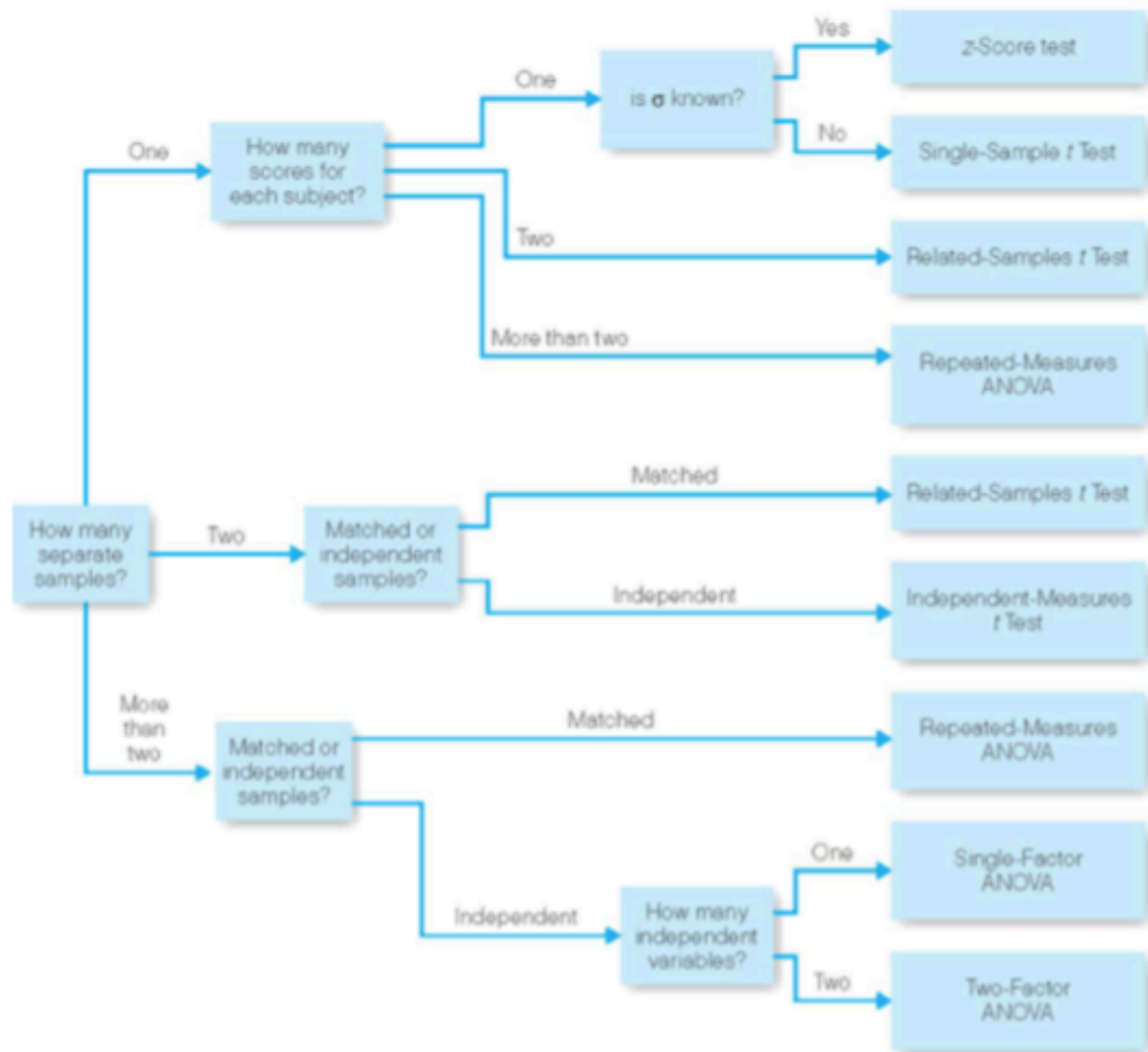
summary

Choosing Descriptive Statistics: A Decision Map



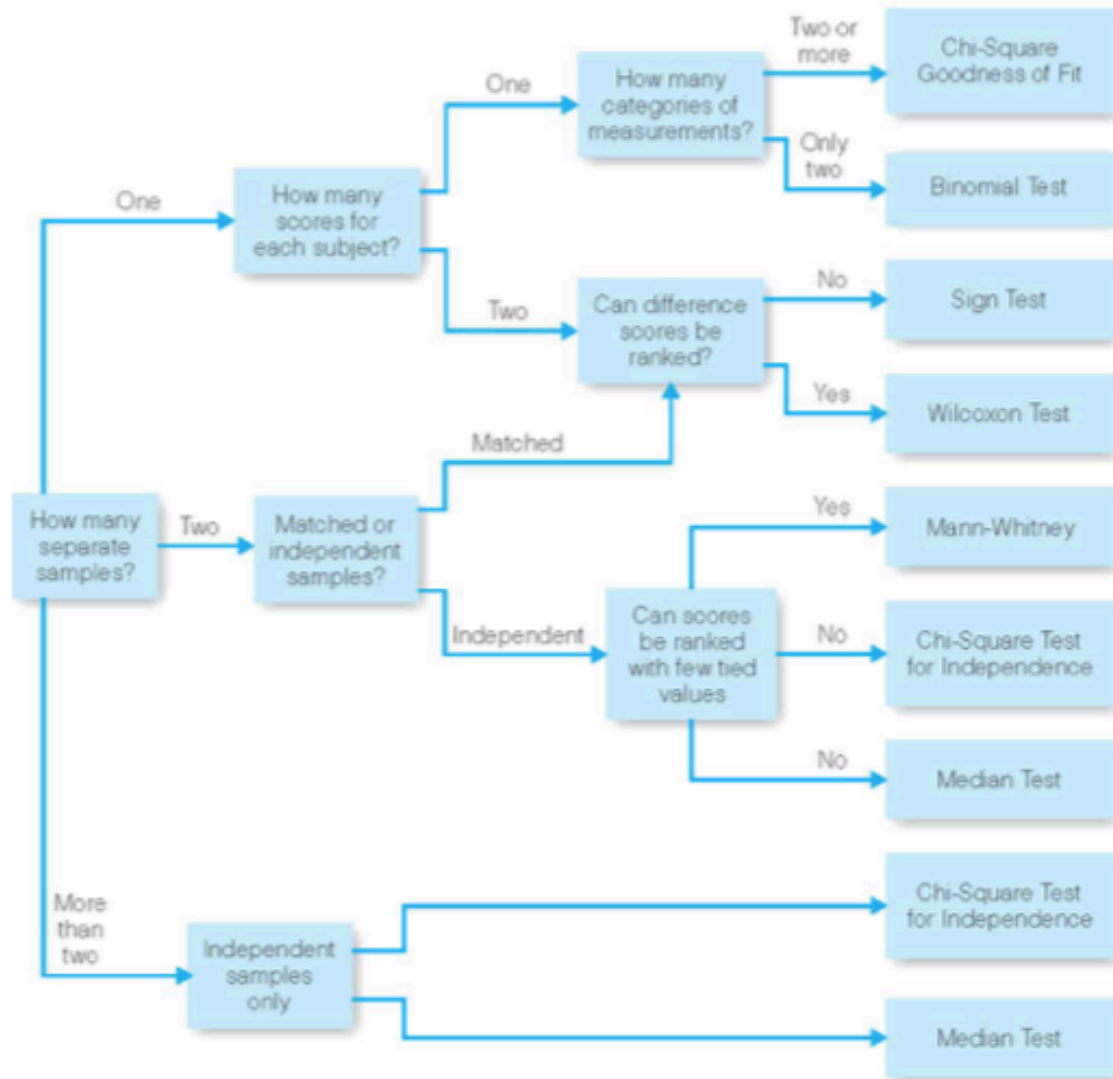
summary

Choosing a Parametric Test: A Decision Map for Making Inferences About Population Means or Mean Differences



summary

Choosing a Nonparametric Test: A Decision Map for Making Inferences About Populations or Population Differences



summary

Choosing a Measure of Relationship Between Two Variables: A Decision Map

