

FACES FROM MAITUM

THE ARCHAEOLOGICAL EXCAVATION
OF AYUB CAVE



EUSEBIO Z. DIZON AND REY A. SANTIAGO



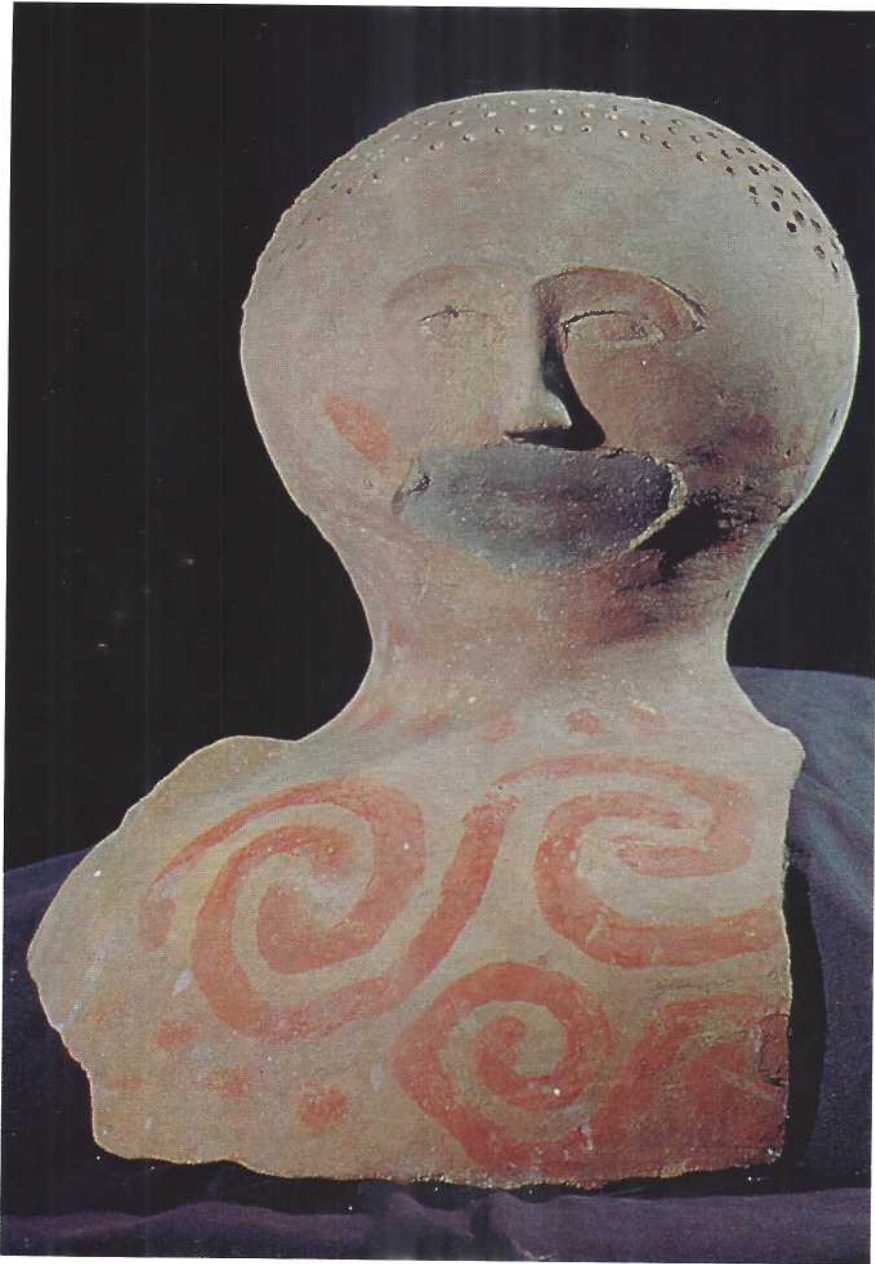
C. Plate 1. XI-1991-P2-145. Anthropomorphic jar lid with head perforations and appliquéd facial features.



C. Plate 2. XI-1991-P2-138. Facial modeling demonstrates an excellent grasp of perspective. The distortion that results from the ovaloid shape is offset by the tilt of the head to achieve the correct foreshortening of facial contour, bringing to the fore the sculptural and emotive quality of the piece.



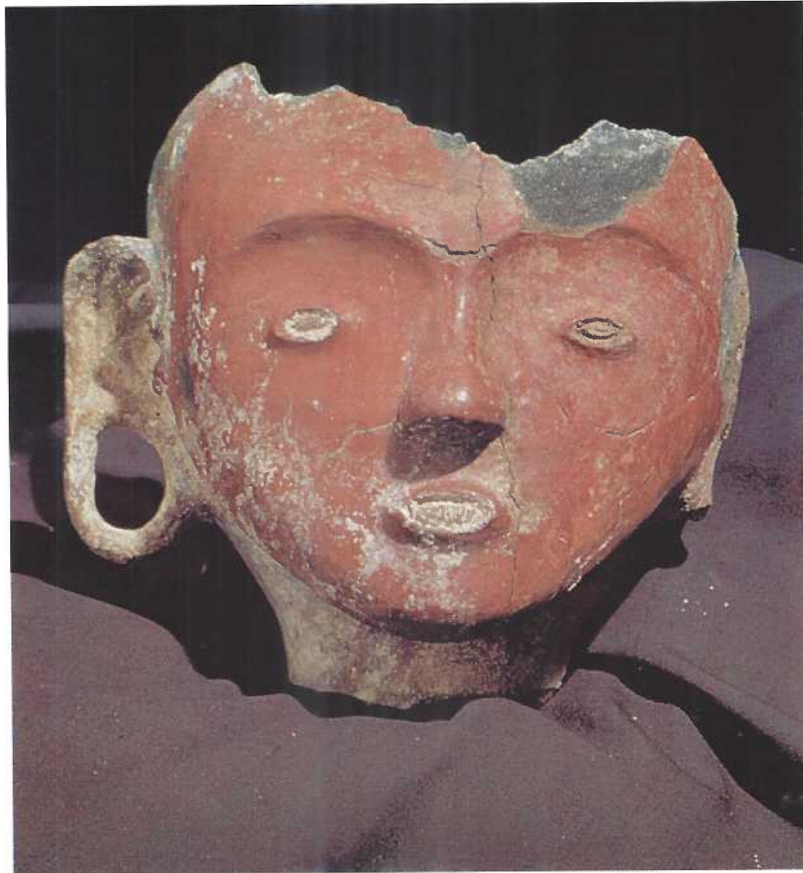
C. Plate 3. XI-1991-P2-85. Organic black paint covers head and lines eyes and brows. The face is washed with red hematite.



C. Plate 4. XI-1991-P2-139. Area around mouth is exfoliated. Decorative red paint on cheeks, neck and body makes it unique.



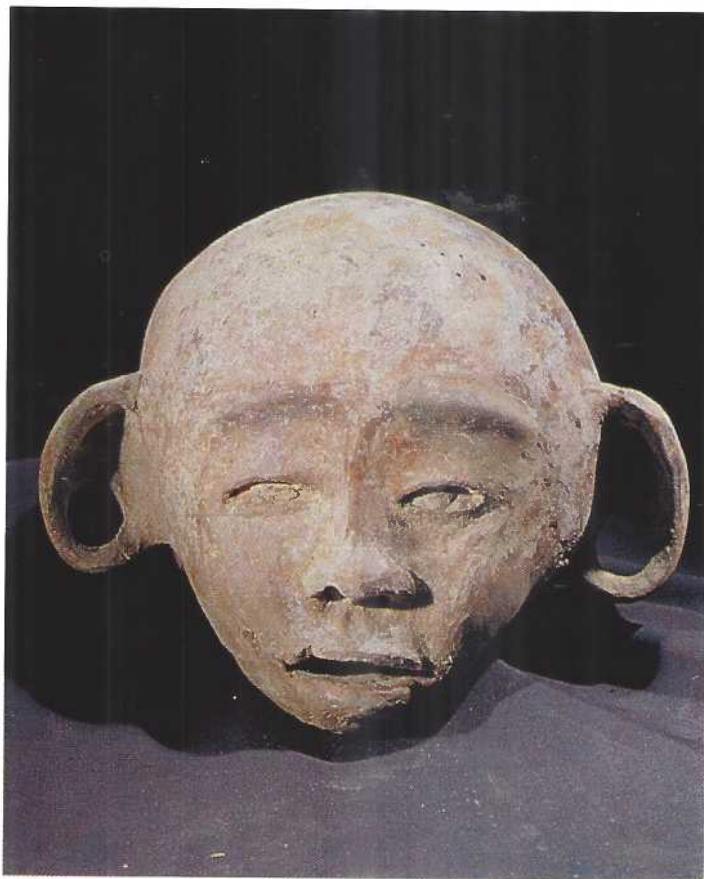
C. Plate 5. XI-1991-P2-136. Thick clay appliqué defines facial features. Open mouth displays a full set of teeth. Scoring on body.



C. *Plate 6.* XI-1991-P2-148. Sweeping brows dramatize small eyes set far apart on a face completely washed with hematite. Distended earlobe and enlarged earhole record prevailing customs.



C. Plate 7. XI-1991-P2-149. Grief on the face of this Maitum mourner is translated by the downward slope of brows, bared teeth and narrowed eyes.



C. *Plate 8.* XI-1991-P2-137. A remarkably gentle face, rendered palpable by its soft lips and tender eyes. Rather atypical compared with the other heads.



C. Plate 9. XI-1991-P2-133 [Cover] P2-134 [Body]. One of the complete burial jars found *in situ* containing juvenile teeth and bones.



C. *Plate 10.* XI-1991-P2-130. This jar obviously represents a male. The head perforations indicate side parting of the hair. The jar contained tiny bone fragments and a deciduous human tooth.



C. Plate 11. XI-1991-P2-154. A narrow face on such a big head! A band of red beads decorates its upper chest. The exfoliated areas show blackened interior, indicative of uneven firing and low combustion.



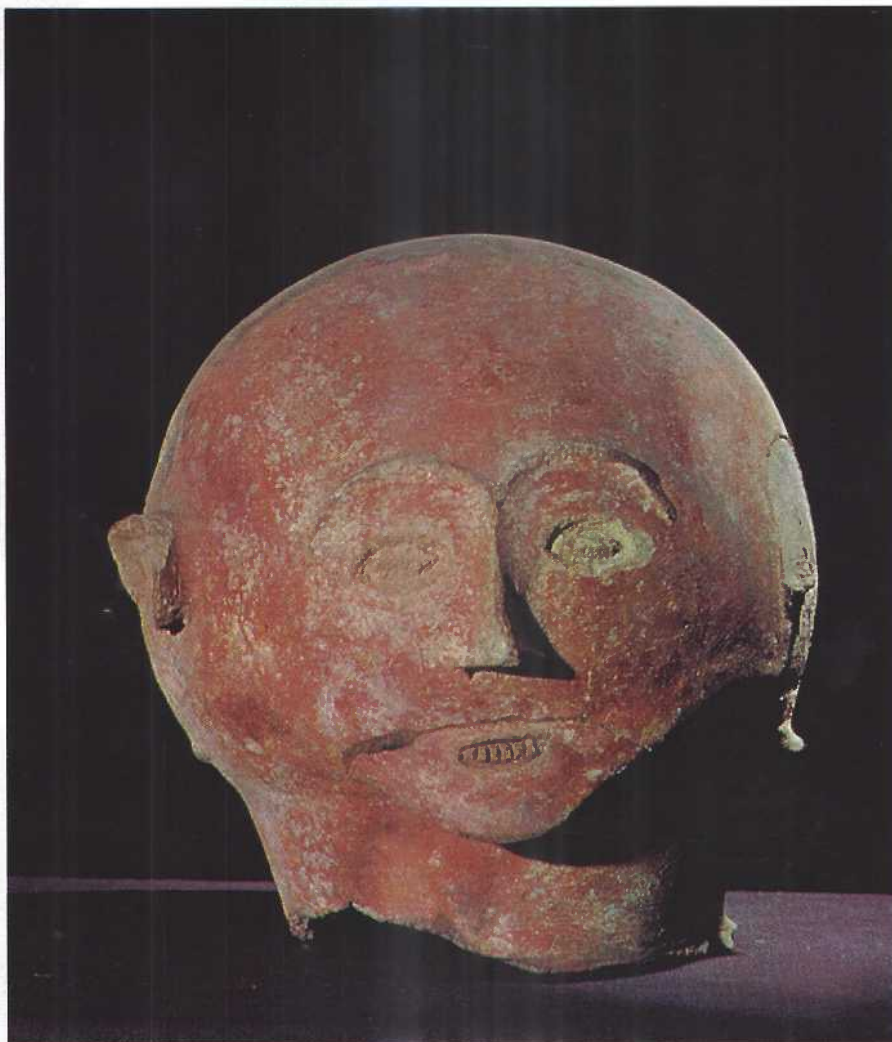
C. Plate 12 . XI-1991-P2-141. A disfigured nose and a missing eyeball do not detract from the appeal of this head, whose eyes appear focused on the distance as if lost in thought.



C. Plate 13 XI-1991-P2-140. Lime encrustation on face has dulled its appearance. An eyeball is missing. The heavy black brows and lids are painted black.



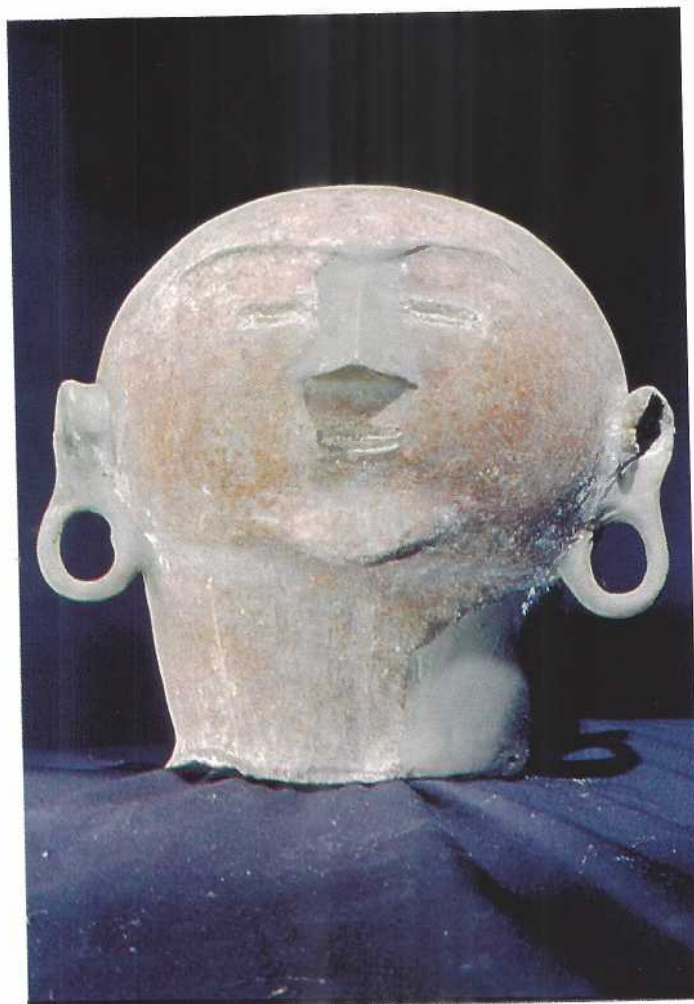
C. Plate 14 . XI-1991-P2-142. Sparse head perforations low on the brow show a middle parting of the hair.



C. Plate 15. XI-1991-P2-39. Hematite slip covers entire head. Stylized knitted brows are common facial traits— design elements which persisted up to the Late Developed Metal Age as found in Mindoro and Batangas wares.



C. Plate 16. XI-1991-P2-38. Anxiety marks this face: slightly flared nostrils, teeth biting its overlip, and widened eyes under brows spanning a broad face.



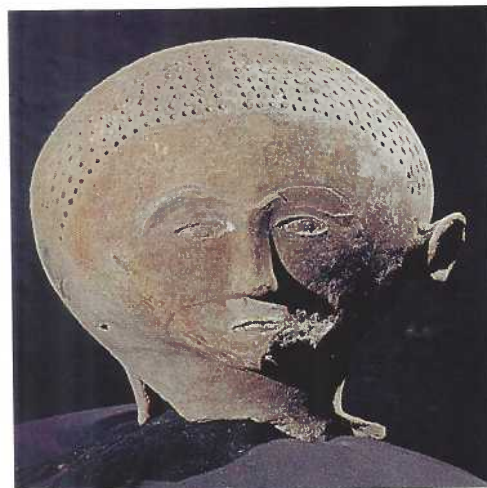
C. Plate 17. XI-1991-P2-20. Hauteur is written all over this face, as if defying death.



C. Plate 18. XI-1991-P2-29. Large perforations cover entire head and indicate a middle hairline parting.



C. Plate 19. XI-1991-P2-24. Missing nose and ears and the cracked lower section disfigure this head.



C. Plate 20. XI-1991-P2-41. Similarly styled as the previous jar heads, but sporting large front teeth.